

*Floor sockets,
that you don't know about...*



INTERIOR



DOUBLE FLOORS



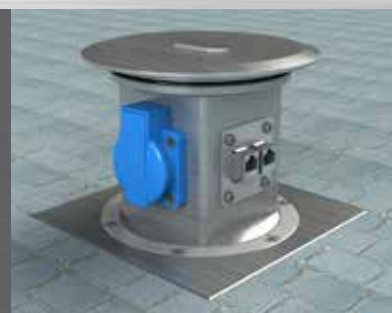
EXTERIOR



INDUSTRY / CEE



PISTON



COLUMN



CATALOG

FLOOR SOCKETS

2022



www.floor-sockets.com

stakohome®

CONTENT



INTERIOR

page 4–12

Design floor sockets designed for apartments, houses, luxury buildings, commercial spaces (offices, exhibition areas, car showrooms), etc .. Equipment according to customer requirements.



DOUBLE FLOORS

page 13–14

Floor sockets designed specifically for double / hollow floors. Different sizes and equipment. Especially suitable for commercial and administrative buildings.



EXTERIOR/IP67

page 15–17

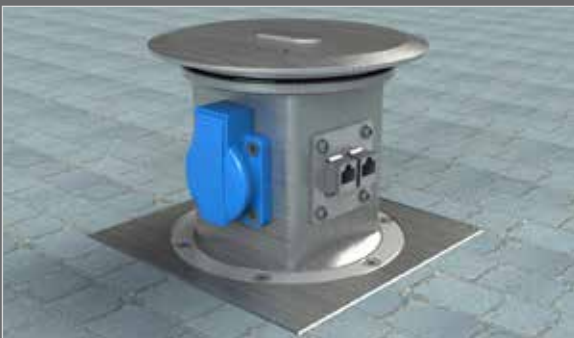
It is a waterproof design. These sockets can be used in areas around the family house, such as terraces, garages, entrances, or in the garden or commercial premises.



INDUSTRY /CEE

page 18–19

Floor and underground sockets equipped with a combination of 230V and 400V sockets. They are intended mainly for industry or commercial premises. Different types, sizes and equipment.



PISTON

page 20-21

Recessed / piston sockets designed mainly for commercial premises, shopping centers, garages, entrances. Equipment / socket combination - 230V, 400V, data. Waterproof design. Easy handling.

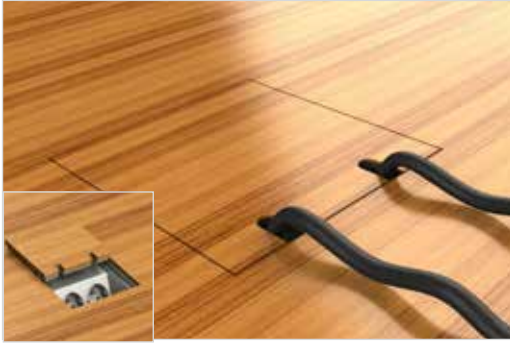


COLUMN

page 22

Energy pole for outdoor installation. Innovative-stable-modern design. Different types of equipment (230V, 400V, DATA etc.), according to customer requirement.

INTERIOR



STAKOHOME-8802-B, 2× socket 230V
STAKOHOME-8802-Bnw, 1× socket 230V, 2× RJ45 cat.6a
STAKOHOME-8802-Bnw, 1× socket 230V, 1× TV-SAT

Solid aluminum cast iron floor box with insert lid. The lid can also be closed when standard plugs are connected.

4 spacer screws allow a slight (approx. 5 mm) adjustment of the lid height so that the floor covering on the lid is in the same plane as the floor covering around the floor box.

Size: 125 × 125 × 70 mm
 Cable entry via 2 holes Ø 25 mm.

The borderless lid can be glued with its own roofing.

Other equipment variants are also possible. The floor box can be equipped various sockets - eg audio, USB, HDMI, etc ..



STAKOHOME-8803-B, 3× socket 230V
STAKOHOME-8803-Bnw, 2× socket 230V, 2× RJ45 cat.6a
STAKOHOME-8803-Bnw, 2× socket 230V, 1× TV-SAT

Solid aluminum cast iron floor box with insert lid. The lid can also be closed when standard plugs are connected.

4 spacer screws allow a slight (approx. 5 mm) adjustment of the lid height so that the floor covering on the lid is in the same plane as the floor covering around the floor box.

Size: 220 × 150 × 70 mm
 Cable entry via 4 holes Ø 25 mm.

The borderless lid can be glued with its own roofing.

Other equipment variants are also possible. The floor box can be equipped various sockets - eg audio, USB, HDMI, etc ..



STAKOHOME-8804-B, 4× socket 230V
STAKOHOME-8804-Bnw, 3× socket 230V, 2× RJ45 cat.6a
STAKOHOME-8804-Bnw, 2× socket 230V, 1× TV-SAT, 2× RJ45 Cat.6a

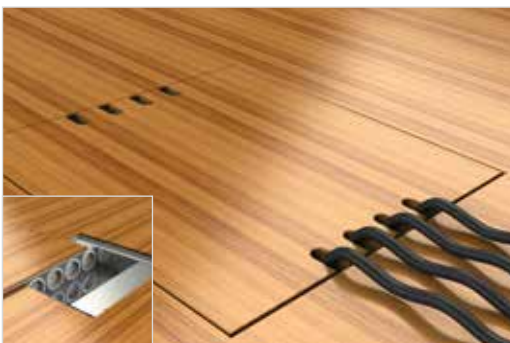
Solid aluminum cast iron floor box with insert lid. The lid can also be closed when standard plugs are connected.

4 spacer screws allow a slight (approx. 5 mm) adjustment of the lid height so that the floor covering on the lid is in the same plane as the floor covering around the floor box.

Size: 220 × 150 × 70 mm
 Cable entry via 4 holes Ø 25 mm.

The borderless lid can be glued with its own roofing.

Other equipment variants are also possible. The floor box can be equipped various sockets - eg audio, USB, HDMI, etc ..



STAKOHOME-8808-B, 8× socket 230V
STAKOHOME-8808-Bnw, 4× socket 230V, 8× RJ45 cat.6a

The square body is made of brushed stainless steel. 2 aluminum socket holders, each for 4 sockets.

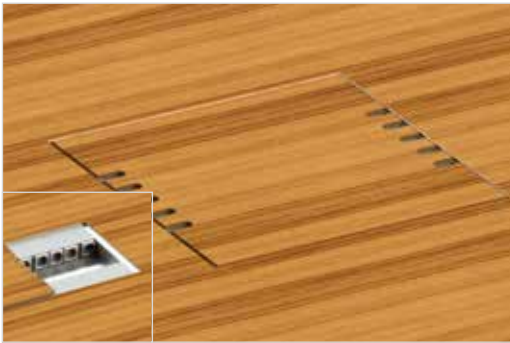
4 spacer screws allow a slight (approx. 5 mm) adjustment of the lid height so that the floor covering on the lid is in the same plane as the floor cover around the floor box.

Size: 240 × 240 × 62 mm
 Cable entry via 8 holes Ø 25 mm.

The lid closes even when the plug is plugged in.

The borderless lid can be glued with its own roofing.

Other equipment variants are also possible. The floor box can be equipped various sockets - eg audio, USB, HDMI, etc ..



STAKOHOME-8810-B, 10x socket 230V
STAKOHOME-8810-Bnw, 6x socket 230V, 8x RJ45 cat.6a

The square body is made of brushed stainless steel. 2 aluminum socket holders, each for 4 sockets.

4 spacer screws allow a slight (approx. 5 mm) adjustment of the lid height so that the floor covering on the lid is in the same plane as the floor cover around the floor box.

Size: 300 × 300 × 62 mm
 Cable entry via 10 holes Ø 25 mm.

The lid closes even when the plug is plugged in.

The borderless lid can be glued with its own roofing.

Other equipment variants are also possible. The floor box can be equipped various sockets - eg audio, USB, HDMI, etc ..



STAKOHOME-9902-B, 2x socket 230V
STAKOHOME-9902-Bnw, 1x socket 230V, 2x RJ45 cat.6a

Round aluminum floor box with insert lid (no hinges).

The lid closes even when the plug is plugged in.

Three spacer legs allow 30mm leveling.

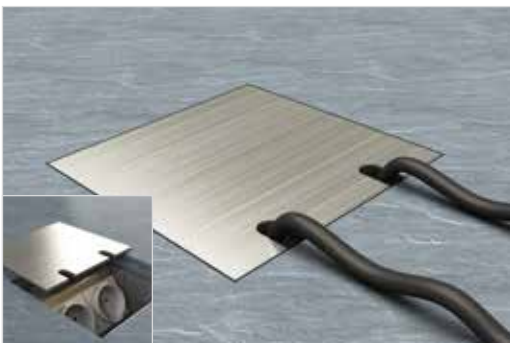
Size: Ø 150x76 mm.

Cable entry via 2 holes Ø 25 mm.

The borderless lid can be glued with its own roofing.

Other equipment (boxes) on request.

The floor box can be equipped various sockets - eg audio, USB, HDMI, etc ..



STAKOHOME-8802-E, 2x socket 230V
STAKOHOME-8802-Enw, 1x socket 230V, 2x RJ45 cat.6a
STAKOHOME-8802-Enw, 1x socket 230V, 1x TV-SAT

Floor box made of solid cast iron with insert lid. The lid can also be closed when standard plugs are connected.

4 spacer screws allow a slight (approx. 5 mm) adjustment of the lid height so that the stainless steel lid is in the same plane as the floor covering around the floor box.

Size: 125 × 125 × 72 mm
 Cable entry via 2 holes Ø 25 mm.

The surface of the lid is made of brushed stainless steel, th. 2 mm.

The floor box can be equipped various sockets - eg audio, USB, HDMI, etc ..

..



STAKOHOME-8804-E, 4x socket 230V
STAKOHOME-8804-Enw, 3x socket 230V, 2x RJ45 cat.6a
STAKOHOME-8804-Enw, 2x socket 230V, 1x TV-SAT, 2xRJ45 Cat.6a

Floor box made of solid cast iron with insert lid. The lid can also be closed when standard plugs are connected.

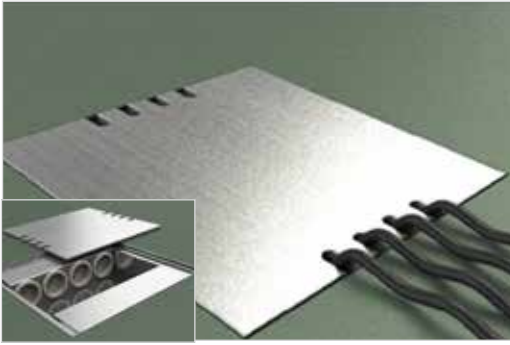
4 spacer screws allow a slight (approx. 5 mm) adjustment of the lid height so that the stainless steel lid is in the same plane as the floor covering around the floor box.

Size: 250 × 150 × 72 mm
 Cable entry via 4 holes Ø 25 mm.

The surface of the lid is made of brushed stainless steel, th. 2 mm.

The floor box can be equipped various sockets - eg audio, USB, HDMI, etc ..

INTERIOR



STAKOHOME-8808-E, 8x socket 230V STAKOHOME-8808-Enw, 4x socket 230V, 8x RJ45 cat.6a

The square body is made of brushed stainless steel.
2 aluminum socket holders, each for 4 sockets.
4 spacer screws allow a slight (approx. 5 mm) adjustment of the lid height so that the stainless steel lid is in the same plane as the floor covering around the floor box.

Size: 240 × 240 × 62 mm
Cable entry via 8 holes Ø 25 mm.
The lid closes even when the plug is plugged in.

Lid design: Stainless steel ground 4 mm.
The floor box can also be equipped with other sockets - TV-SAT, audio, USB, HDMI, etc.



STAKOHOME-8902-BK, 2x socket 230V STAKOHOME-8902-BKnw, 1x socket 230V, 2x RJ45 cat.6a STAKOHOME-8902-BKnw, 1x socket 230V, 1x TV-SAT

Height-adjustable floor box.
The installation tray, frame and lid are made of stainless steel.
The lid closes even when the plug is plugged in.

Size: 150 × 150 × 90 mm Adjustable range 30 mm

Cable entry: from the back, bottom and sides, total 6 × Ø25mm.

The hinged lid with brush is removable and can be lined with tiles, stone, wood, vinyl, carpet, etc. up to 15 mm thick. Also suitable for cast floors. Spacer / leveling screws allow the height to be adjusted up to approx. 30 mm so that the floor covering in the lid is in the same plane as the floor covering around the floor box.

The floor box can also be equipped with other sockets - TV-SAT, audio, USB, HDMI, etc.



STAKOHOME-8904-BK, 4x socket 230V STAKOHOME-8904-BKnw, 3x socket 230V, 2x RJ45 cat.6a STAKOHOME-8904-BKnw, 3x socket 2230V, 1x TV-SAT

Height-adjustable floor box.
The installation tray, frame and lid are made of stainless steel.
The lid closes even when the plug is plugged in.

Size: 205 × 153 × 90 mm Adjustable range 30 mm

Cable entry: from the back, bottom and sides, total 8 × Ø25mm..

The hinged lid with brush is removable and can be lined with tiles, stone, wood, vinyl, carpet, etc. up to 15 mm thick. Also suitable for cast floors. Spacer / leveling screws allow the height to be adjusted up to approx. 30 mm so that the floor covering in the lid is in the same plane as the floor covering around the floor box.

The floor box can also be equipped with other sockets - TV-SAT, audio, USB, HDMI, etc.



STAKOHOME-8906-BK, 6x socket 230V STAKOHOME-8906-BKnw, 5x socket 230V, 2x RJ45 cat.6a STAKOHOME-8906-BKnw, 5x socket 2230V, 1x TV-SAT

Height-adjustable floor box.
The installation tray, frame and lid are made of stainless steel.
The lid closes even when the plug is plugged in.

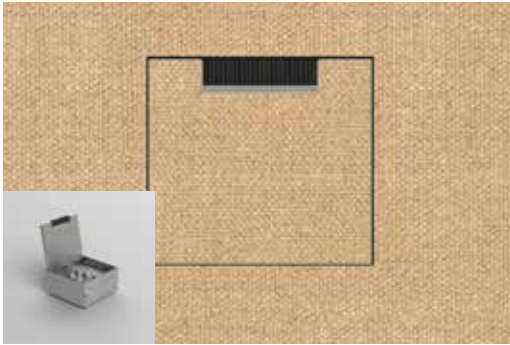
Size: 211 × 205 × 90 mm

Adjustable range 30 mm

Cable entry: from the back, bottom and sides, total 12 × Ø25mm.

The hinged lid with brush is removable and can be lined with tiles, stone, wood, vinyl, carpet, etc. up to 15 mm thick. Also suitable for cast floors. Spacer / leveling screws allow the height to be adjusted up to approx. 30 mm so that the floor covering in the lid is in the same plane as the floor covering around the floor box.

The floor box can also be equipped with other sockets - TV-SAT, audio, USB, HDMI, etc.



STAKOHOME-8908-BK, 8x socket 230V
STAKOHOME-8908-BKnw, 6x socket 230V, 4x RJ45 cat.6a
STAKOHOME-8908-BKnw, 7x socket 2230V, 1x TV-SAT

Height-adjustable floor box.

The installation tray, frame and lid are made of stainless steel.

The lid closes even when the plug is plugged in.

Size: 211 × 205 × 90 mm Adjustable range 30 mm

Cable entry: from the back, bottom and sides, total 12 × Ø25mm.

The hinged lid with brush is removable and can be lined with tiles, stone, wood, vinyl, carpet, etc. up to 15 mm thick. Also suitable for cast floors. Spacer / leveling screws allow the height to be adjusted up to approx. 30 mm so that the floor covering in the lid is in the same plane as the floor covering around the floor box.

The floor box can also be equipped with other sockets - TV-SAT, audio, USB, HDMI, etc..



STAKOHOME-89NS

Accessories designed for floor sockets

STAKOHOME-8901-B, STAKOHOME-8902-B,

STAKOHOME-8903-B, STAKOHOME-8904-B,

STAKOHOME-8906-B, STAKOHOME-8908-B

Thanks to these accessories, the above-mentioned floor boxes can also be used in raised/double floors or in situations where it is not possible to concrete the boxes. Sockets marked H are then directly intended for raised/double floors, ie. STAKOHOME-8902-H etc ..

Material: galvanized sheet metal

Load: 120 kg

Leveling range: approx. 53 to 153 mm, 20 mm each



STAKOHOME-8901-B, 1x socket 230V
STAKOHOME-8901-Bnw, 2x RJ45 cat.6a
STAKOHOME-8901-Bnw, 1x TV-SAT

Height-adjustable floor box.

The frame and lid are made of stainless steel.

The lid closes even when the plug is plugged in.

Size: 120 × 120 × 90 mm

Adjustable range 30 mm

Cable entry: from the back, bottom and sides, total 6 × Ø25mm.

The hinged lid is removable and can be lined with tiles, stone, wood, vinyl, carpet, etc. up to 15 mm thick. Spacer / leveling screws allow the height to be adjusted up to approx. 30 mm so that the floor covering in the lid is in the same plane as the floor covering around the floor box.

The floor box can also be equipped with other sockets - TV-SAT, audio, USB, HDMI, etc.



STAKOHOME-8902-B, 2x socket 230V
STAKOHOME-8902-Bnw, 1x socket 230V, 2x RJ45 cat.6a
STAKOHOME-8902-Bnw, 1x socket 2230V, 1x TV-SAT

Height-adjustable floor box.

The frame and lid are made of stainless steel.

The lid closes even when the plug is plugged in.

Size: 150 × 150 × 90 mm

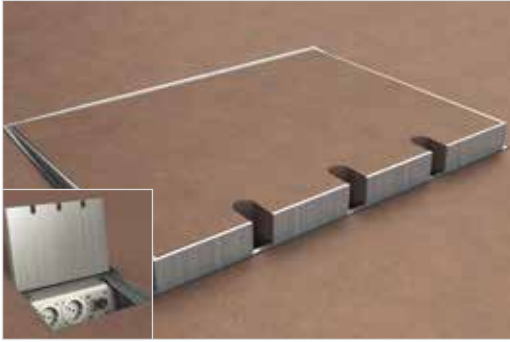
Adjustable range 30 mm

Cable entry: from the back, bottom and sides, total 6 × Ø25mm.

The hinged lid is removable and can be lined with tiles, stone, wood, vinyl, carpet, etc. up to 15 mm thick. Spacer / leveling screws allow the height to be adjusted up to approx. 30 mm so that the floor covering in the lid is in the same plane as the floor covering around the floor box.

The floor box can also be equipped with other sockets - TV-SAT, audio, USB, HDMI, etc.

INTERIOR



STAKOHOME-8903-B, 3x socket 230V
STAKOHOME-8903-Bnw, 2x socket 230V, 2x RJ45 cat.6a
STAKOHOME-8903-Bnw, 2x socket 230V, 1x TV-SAT

Height-adjustable floor socket.

The frame and lid are made of stainless steel.

The lid can also be closed when standard plugs are connected.

Size: 200 × 150 × 90 mm

Cable entry: from the back, bottom and sides, total 6 × Ø25mm.

The hinged lid is removable and can be lined with tiles, stone, wood, vinyl, carpet, etc. up to 15 mm thick. Spacer / leveling screws allow the height to be adjusted up to approx. 30 mm so that the floor covering in the lid is in the same plane as the floor covering around the floor box

The floor box can also be equipped with other sockets - audio, USB, HDMI, etc ..



STAKOHOME-8904-B, 4x socket 230V
STAKOHOME-8904-Bnw, 3x socket 230V, 2x RJ45 cat.6a
STAKOHOME-8904-Bnw, 2x socket 230V, 1x TV-SAT, 2x RJ45 Cat.6a

Height-adjustable floor socket.

The frame and lid are made of stainless steel.

The lid can also be closed when standard plugs are connected.

Size: 200 × 150 × 90 mm

Cable entry: from the back, bottom and sides, total 6 × Ø25mm.

The hinged lid is removable and can be lined with tiles, stone, wood, vinyl, carpet, etc. up to 15 mm thick. Spacer / leveling screws allow the height to be adjusted up to approx. 30 mm so that the floor covering in the lid is in the same plane as the floor covering around the floor box

The floor box can also be equipped with other sockets - audio, USB, HDMI, etc ..



STAKOHOME-8906-B, 6x socket 230V
STAKOHOME-8906-Bnw, 4x socket 230V, 4x RJ45 cat.6a

Height-adjustable floor socket, 6-fold.

The frame and lid are made of stainless steel. The lid can also be closed when standard plugs are connected.

Size: 200 × 200 × 90 mm

Adjustable range: 30 mm

Cable entry: from the bottom 4 × Ø25mm and sides 12 × Ø25mm.

The hinged lid is removable and can be lined with tiles, stone, wood, vinyl, carpet, etc. up to 15 mm thick. Spacer / leveling screws allow the height to be adjusted up to approx. 30 mm so that the floor covering in the lid is in the same plane as the floor covering around the floor box

The floor box can also be equipped with other sockets - audio, USB, HDMI, etc ..



STAKOHOME-8908-B, 8x socket 230V
STAKOHOME-8908-Bnw, 4x socket 230V, 8x RJ45 cat.6a

Height-adjustable floor socket, 6-fold.

The frame and lid are made of stainless steel. The lid can also be closed when standard plugs are connected.

Size: 200 × 200 × 90 mm

Adjustable range: 30 mm

Cable entry: side 12 × Ø25mm, bottom 4 × Ø25mm.

The hinged lid is removable and can be lined with tiles, stone, wood, vinyl, carpet, etc. up to 15 mm thick. Spacer / leveling screws allow the height to be adjusted up to approx. 30 mm so that the floor covering in the lid is in the same plane as the floor covering around the floor box

The floor box can also be equipped with other sockets - audio, USB, HDMI, etc ..



STAKOHOME-8912-B, 12x socket 230V
STAKOHOME-8912-Bnw, 8x socket 230V, 8x RJ45 cat.6a

Height-adjustable floor socket.

The frame and lid are made of stainless steel.
 The lid can also be closed when standard plugs are connected.

Size: 300 × 300 × 90 mm
 Adjustable range: 30 mm
 Cable entry: 8 × Ø25mm on the sides, 8 × Ø25mm on the bottom and 2 × Ø25mm on the sides.

The hinged lid is removable and can be lined with tiles, stone, wood, vinyl, carpet, etc. up to 15 mm thick. Spacer / leveling screws allow the height to be adjusted up to approx. 30 mm so that the floor covering in the lid is in the same plane as the floor covering around the floor box

The floor box can also be equipped with other sockets - audio, USB, HDMI, etc ..



STAKOHOME-9901-A, 1x socket 230V
STAKOHOME-9901-Anw, 2x RJ45 cat.6a

Floor box made of solid aluminum with insert lid.
 The lid can also be closed when standard plugs are connected.

It can also be installed in double / hollow floors.

Size: Wreath / frame Ø140mm, box approx. Ø 120 × 71 mm.

Cable entry: side and bottom through always 2 holes Ø 25 mm.

The lid can be used on both sides: Natural aluminum anodised (matt) lid, can be lined with carpet, linoleum, wood, vinyl, etc. (5 mm thick).
 or Possible colors: black, gold brass, etc.

The floor box can also be equipped with other sockets - audio, USB, HDMI, etc ..



STAKOHOME-9902-A, 2x socket 230V
STAKOHOME-9902-Anw, 1x socket 230V, 2x RJ45 cat.6a

Floor box made of solid aluminum with insert lid.
 The lid can also be closed when standard plugs are connected.

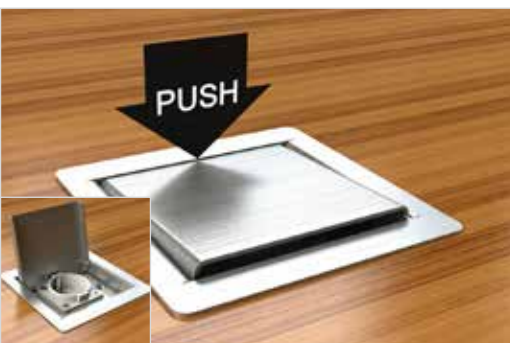
It can also be installed in double / hollow floors.

Size: Wreath / frame Ø 170 mm, box cca Ø 150 × 71 mm.

Cable entry: on the side and bottom via 2 holes Ø 25 mm.

The lid can be used on both sides: Natural aluminum anodised (matt) lid, can be lined with carpet, linoleum, wood, vinyl, etc. (5 mm thick).
 or Possible colors: black, gold brass, etc.

The floor box can also be equipped with other sockets - audio, USB, HDMI, etc ..



STAKOHOME-3301-E, 1x socket 230V
STAKOHOME-3301-Enw, 2x RJ45 cat.6a
STAKOHOME-3301, installation tray

Floor socket made of brushed stainless steel 1.5 mm, with tilting (manually - this is not an opening system, eg click / push) lid.

Size: 110 × 110 × 62 mm

Installation tray 92 × 89 × 60 mm (galvanized sheet steel)

The socket holder can be removed from the front for mounting. To the right and left are always 2 drilled holes for mounting.

Very suitable for small installation depths, such as trade fairs, kitchens, work surfaces, etc.

The floor box can also be equipped with other sockets - audio, USB, HDMI, etc ..

INTERIOR



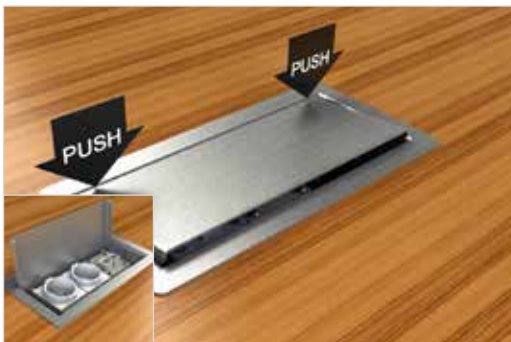
STAKOHOME-3302-E, 2x socket 230V
STAKOHOME-3302-Enw, 1x socket 230V, 2x RJ45 cat.6a
STAKOHOME-3302-Enw, 1x socket 230V, 1x TV-SAT
STAKOHOME-3302, instalation tray

Floor box made of brushed stainless steel 1.5 mm, with hinged (manual - this is no opening system, eg click / push) lid.

Size: 160 × 110 × 62 mm. **Installation tray** 136 × 88 × 60 mm (galvanized sheet steel) For mounting purposes, the socket holder can be removed from the front. To the right and left are always 2 drilled holes for mounting.

Very suitable for small installation depths, such as trade fair stands, kitchens, work surfaces, etc.

The floor box can also be equipped with other sockets - audio, USB, HDMI, etc ..



STAKOHOME-3303-E, 3x socket 230V
STAKOHOME-3303-Enw, 2x socket 230V, 2x RJ45 cat.6a
STAKOHOME-3303-Enw, 2x socket 230V, 1x TV-SAT
STAKOHOME-3303, instalation tray

Floor box made of brushed stainless steel 1.5 mm, with hinged (manual - this is no opening system, eg click / push) lid.

Size: 220 × 110 × 62mm. **Installation tray:** 197 × 88 × 60 mm (galvanized sheet steel) For mounting purposes, the socket holder can be removed from the front. To the right and left are always 2 drilled holes for mounting.

Very suitable for small installation depths, such as trade fair stands, kitchens, work surfaces, etc.

The floor box can also be equipped with other sockets - audio, USB, HDMI, etc ..



STAKOHOME- 4402-E, 2x socket 230V
STAKOHOME-4402-Enw, 1x socket 230V, 2x RJ45 cat.6a
STAKOHOME-4402-Enw, 1x socket 230V, 1x TV-SAT
STAKOHOME-4402, instalation tray

Connection module made of brushed stainless steel 1.5 mm with hinged lid, can be used as a table connection or floor box. The lid closes even when the plug is plugged in.

Size: 180 × 140 × 60 mm

Installation hole: approx. 160 × 120 mm

Installation tray: 165 × 145 × 82 mm

Inlet from the rear, the socket holder can be removed for mounting purposes.

The lid only opens manually.

Very suitable for work surfaces, trade fair stands, etc.

The floor box can also be equipped with other sockets - audio, USB, HDMI, etc ..



STAKOHOME-9902-D, 2x socket 230V
STAKOHOME-9902-Dnw, 1x socket 230V, 2x RJ45 cat.6a

Floor box made of solid aluminum with insert and swivel lid. The lid can also be closed when standard plugs are connected.

IP65 - by turning the lid by 180 ° (when the cables from the appliance - plugs are not connected), IP20 - when using (when connecting the cables).

It can also be installed in double / hollow floors.

Lid natural aluminum anodised (matt), possible colors: black, gold brass.

Size: Wreath / frame Ø 170 mm, box Ø 150x71 mm.

Inlet side and bottom through always 2 holes Ø 25 mm.

The floor box can also be equipped with other sockets - audio, USB, HDMI, etc ..

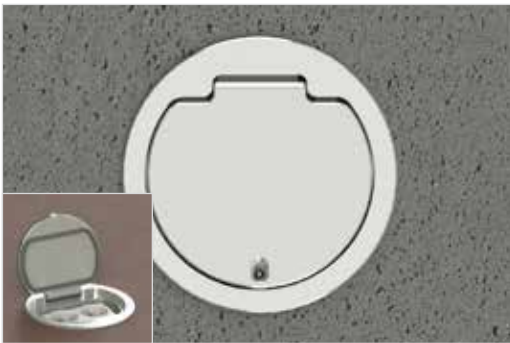


STAKOHOME-8601-A, 1x socket 230V
STAKOHOME-8601-Anw, 1x socket 230V, 1x RJ45 cat.6a

Round floor box with hinged lid. Mobile, with lid seal.
 Suitable for cleaning with floor sweepers.
 It can also be installed in double / hollow floors.

Size: Wreath / frame Ø 140 mm, box approx. Ø 117 × 60 mm.
 Cable entry: via 2 holes Ø 20 mm.
 In closed state type of protection IP65.

Lid and frame made of solid aluminum, stainless steel look, anodised.
The floor box can also be equipped with other sockets - audio, USB, HDMI, etc ..



STAKOHOME-8602-A, 2x socket 230V
STAKOHOME-8602-Anw, 1x socket 230V, 2x RJ45 cat.6a

Round floor box with hinged lid. Mobile, with lid seal.
 Suitable for cleaning with floor sweepers.
 It can also be installed in double / hollow floors.

Size: Wreath / frame Ø 150 mm, box approx. Ø 130 × 68 mm.
 Cable entry: via 2 holes Ø 25 mm.
 In closed state type of protection IP65.

Lid and frame made of solid aluminum, stainless steel look, anodised.

The floor box can also be equipped with other sockets - audio, USB, HDMI, etc ..



STAKOHOME-2004-B, 4x socket 230V
STAKOHOME-2004-Bnw, 3x socket 230V, 2x RJ45 cat.6a

Floor box with hinged lid (opening and closing without tools - manually).
 The body is made of stainless steel with a thickness of 1.5 mm.
 Load capacity: 900kg. In closed state type of protection IP54.
 Suitable for cleaning with floor sweeping / washing machines.

Size: 200x200x102 mm (height)
 Supply via 4 cable glands Ø 25 mm.

The borderless lid can be glued with its own roofing.

The floor box can also be equipped with other sockets - audio, USB, HDMI, etc ..



STAKOHOME-2008-B, 8x socket 230V
STAKOHOME-2008-Bnw, 7x socket 230V, 2x RJ45 cat.6a

Floor box with hinged lid (opening and closing without tools - manually).

The body is made of stainless steel with a thickness of 1.5 mm.

Load capacity: 900kg. In closed state type of protection IP54. Suitable for cleaning with floor sweeping / washing machines.

Size: 250x250x102 mm (height)

Supply via 8 cable glands Ø 25 mm.

The borderless lid can be glued with its own roofing.

The floor box can also be equipped with other sockets - audio, USB, HDMI, etc ..

INTERIOR



STAKOHOME-8308-A, 8x socket 230V STAKOHOME-8308-Anw, 4x socket 230V, 8x RJ45 cat.6a

Floor box with hinged lid. Suitable for cleaning with floor sweeping / washing machines. Aluminum lid and frame, stainless steel look, anodised. The body is made of cast iron.

Can be loaded by car. Built at ground level.

The socket cover can be secured so that the cover is half open during use and the cables pass through this hole (this will not damage the cables).

Size: 250 × 160 × 131 mm

Cable entry: side through 4 holes Ø 25 mm.

In closed state type of protection IP64.

Other equipment variants are also possible. The floor box can be equipped with various sockets - eg audio, USB, HDMI, etc ..



STAKOHOME-2003-A, 3x socket 230V STAKOHOME-2003-Anw, 2x socket 230V, 2x RJ45 cat.6a

Floor box with hinged lockable lid. With lid seal.

Suitable for cleaning with floor sweeping / washing machines.

The socket cover can be secured so that the cover is half open during use and the cables pass through this hole (this will not damage the cables).

Size: 200 × 200 × 90 mm

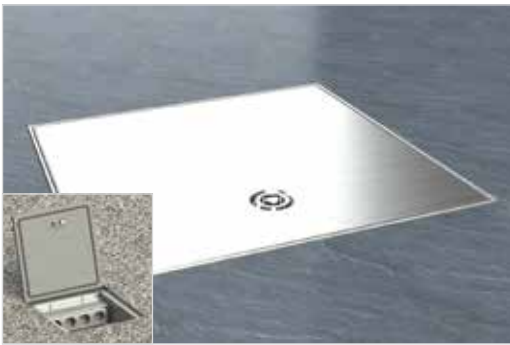
Cable entry: via 2 side holes Ø 25 mm.

Stainless steel body, aluminum lid, anodised to look like stainless steel.

In closed state type of protection IP54.

Possibility also in a variant with a tube (part of the lid is a tube for cable passage), type STAKOHOME-2003-TUBUS-A

The floor box can also be equipped with other sockets - TV-SAT, audio, USB, HDMI, etc ..



STAKOHOME-2004-A, 4x socket 230V STAKOHOME-2004-Anw, 3x socket 230V, 2x RJ45 cat.6a

Floor box with hinged lockable lid. With lid seal.

Suitable for cleaning with floor sweeping / washing machines.

The socket cover can be secured so that the cover is half open during use and the cables pass through this hole (this will not damage the cables).

Size: 250 × 250 × 90 mm

Cable entry: via 4 side holes Ø 25 mm.

Stainless steel body, aluminum lid, anodised to look like stainless steel.

In closed state type of protection IP54.

Possibility also in a variant with a tube (part of the lid is a tube for cable passage), type STAKOHOME-2004-TUBUS-A

The floor box can also be equipped with other sockets - TV-SAT, audio, USB, HDMI, etc ..



STAKOHOME-2008-A, 8x socket 230V STAKOHOME-2008-Anw, 4x socket 230V, 8x RJ45 cat.6a

Floor box with hinged lockable lid. With lid seal.

Suitable for cleaning with floor sweeping / washing machines.

The socket cover can be secured so that the cover is half open during use and the cables pass through this hole (this will not damage the cables).

Size: 250 × 250 × 90 mm

Cable entry: via 8 side holes Ø 25 mm.

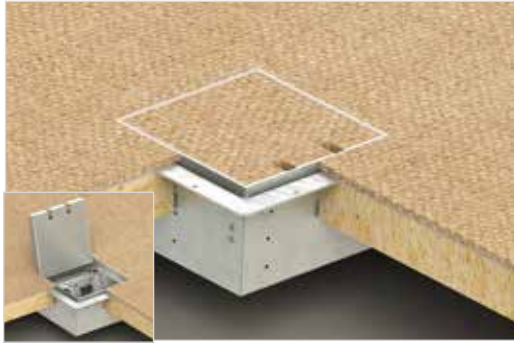
Stainless steel body, aluminum lid, anodised to look like stainless steel.

In closed state type of protection IP54.

Possibility also in a variant with a tube (part of the lid is a tube for cable passage), type STAKOHOME-2008-TUBUS-A

The floor box can also be equipped with other sockets - TV-SAT, audio, USB, HDMI, etc ..

DOUBLE FLOORS



STAKOHOME-8902-H, 2x socket 230V STAKOHOME-8902-Hnw, 1x socket 230V, 2x RJ45 cat.6a

Floor socket for double / hollow floors, double.

Height adjustable. Spacer / leveling screws allow the height to be adjusted up to approx. 30 mm so that the floor covering in the lid is in the same plane as the floor covering around the floor drawer.

The frame and lid are made of stainless steel.
The lid can also be closed when standard plugs are connected.

Size: 150 × 150 × 90 mm
Cable entry: from the back, bottom and sides, total 6 × Ø25mm.

The hinged lid is removable and can be lined with a layer of stone, wood, carpet, linoleum, vinyl, etc. up to 15 mm thick.

The floor box can also be equipped with other sockets - audio, TV-SAT, HDMI, USB, etc ..



STAKOHOME-8904-H, 4x socket 230V STAKOHOME-8904-Hnw, 3x socket 230V, 2x RJ45 cat.6a

Floor socket for double / hollow floors, quadruple

Height adjustable. Spacer / leveling screws allow the height to be adjusted up to approx. 30 mm so that the floor covering in the lid is in the same plane as the floor covering around the floor drawer.

The frame and lid are made of stainless steel.
The lid can also be closed when standard plugs are connected.

Size: 200 × 150 × 90 mm
Cable entry: from the back, bottom and sides, total 6 × Ø25mm.

The hinged lid is removable and can be lined with a layer of stone, wood, carpet, linoleum, vinyl, etc. up to 15 mm thick.

The floor box can also be equipped with other sockets - audio, TV-SAT, HDMI, USB, etc ..



STAKOHOME-8908-H, 8x socket 230V STAKOHOME-8908-Hnw, 6x socket 230V, 4x RJ45 cat.6a

Floor socket for double / hollow floors, sixfold

Height adjustable. Spacer / leveling screws allow the height to be adjusted up to approx. 30 mm so that the floor covering in the lid is in the same plane as the floor covering around the floor drawer.

The frame and lid are made of stainless steel.
The lid can also be closed when standard plugs are connected.

Size: 200 × 200 × 90 mm
Cable entry: from the back, bottom and sides, total 8 × Ø25mm.

The hinged lid is removable and can be lined with a layer of stone, wood, carpet, linoleum, vinyl, etc. up to 15 mm thick.

The floor box can also be equipped with other sockets - audio, TV-SAT, HDMI, USB, etc ..



STAKOHOME-8501-B, 1x socket 230V STAKOHOME-8501-Bnw, 2x RJ45 cat.6a

Installation tray for double / hollow floors, quadruple.

The frame, lid and installation tray are made of stainless steel.
The lid can also be closed by connecting standard straight or curved plugs.

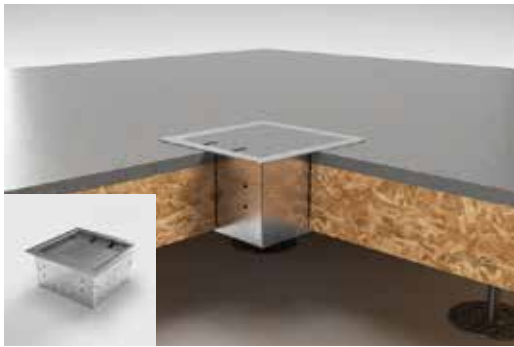
Size: 150 × 150 × height 90-103 mm (size including frame), hole: approx. 126 × 126 mm

Cable entry: from the back, bottom and sides, total 4 × Ø25mm.

The hinged lid is removable and can be lined with a layer of stone, wood, carpet, linoleum, etc. up to 15 mm thick.

The floor box can also be equipped with other components / sockets - audio, HDMI, etc ..

DOUBLE FLOORS



STAKOHOME-8502-B, 2x socket 230V STAKOHOME-8502-Bnw, 1x socket 230V, 2x RJ45 cat.6a

Installation tray for double / hollow floors, quadruple.

The frame, lid and installation tray are made of stainless steel.
The lid can also be closed by connecting standard straight or curved plugs.

Size: 180 × 180 × height 90-103 mm (size including frame), opening: approx. 155 × 155 mm

Cable entry: from the back, bottom and sides, total 6 × Ø25mm.

The hinged lid is removable and can be lined with a layer of stone, wood, carpet, linoleum, etc. up to 15 mm thick.

The floor box can also be equipped with other components / sockets - audio, HDMI, etc ..



STAKOHOME-8504-B, 4x socket 230V STAKOHOME-8504-Bnw, 3x socket 230V, 2x RJ45 cat.6a STAKOHOME-8504-Bnw, 3x socket 230V, 1x TV-SAT

Installation tray for double / hollow floors, quadruple.

The frame, lid and installation tray are made of stainless steel.
The lid can also be closed by connecting standard straight or curved plugs.

Size: 230 × 180 × 90 mm (size including frame), opening: approx. 205 × 155 mm

Cable entry: from the back, bottom and sides, total 6 × Ø25mm.

The hinged lid is removable and can be lined with a layer of stone, wood, carpet, linoleum, etc. up to 15 mm thick.

The floor box can also be equipped with other components / sockets - audio, HDMI, etc ..



STAKOHOME-8508-B, 8x socket 230V STAKOHOME-8508-Bnw, 4x socket 230V, 8x RJ45 cat.6a

Installation tray for double / hollow floors.

The frame, lid and installation tray are made of stainless steel.
The lid can also be closed by connecting standard straight or curved plugs.

Size: 230 × 230 × height 90-103 mm (size including frame), opening: approx. 205 × 205 mm

Cable entry: side 8 × Ø25mm, bottom 8 × Ø25mm

The hinged lid is removable and can be lined with a layer of stone, wood, vinyl, linoleum, etc. up to 15 mm thick.

The floor box can also be equipped with other components / sockets - TV-SAT, audio, HDMI, etc ..



STAKOHOME-8502-E, 2x socket 230V STAKOHOME-8504-E, 4x socket 230V STAKOHOME-8508-Enw, 6x socket 230V, 4x RJ45 cat.6a

Installation tray for double / hollow floors.

The frame, lid and installation tray are made of stainless steel.
The lid can also be closed by connecting standard straight or curved plugs.

Size: 150 × 150 × height 90-103 mm to 230 × 230 (size including frame)

Cable entry: from the back, bottom and sides Ø 25 mm.

This type is manufactured for 1-8 modules (sockets). STAKOHOME-8501-E, STAKOHOME-8504-B, STAKOHOME-8508-B.

The floor box can also be equipped with other components / sockets - audio, HDMI, etc ..

EXTERIOR/IP67


STAKOHOME-7601-A, 1× socket 230V
STAKOHOME-7601-Anw, 1× RJ45 cat.6a

Square floor box with screw cap with key.

Built at floor level, made of solid gray PVC.

The upper part is made of solid aluminum with the appearance of stainless steel, anodised.

When closed, it is waterproof, type of protection IP67.

Size: 100 × 100 × 82 mm

Cable entry: side via 2 M25 cable entries.


STAKOHOME-7602-A, 2× socket 230V
STAKOHOME-7602-Anw, 1× socket 230V, 1× RJ45 cat.6a

Square floor box with screw cap with key.

Built at floor level, made of solid gray PVC.

The upper part is made of solid aluminum with the appearance of stainless steel, anodised.

When closed, it is waterproof, type of protection IP67.

Size: 200 × 100 × 82 mm

Cable entry: side via 2 M25 cable entries.


STAKOHOME-7701-A, 1× socket 230V
STAKOHOME-7701-Anw, 1×RJ45 Cat.6a

Round floor box with screw cap with key.

Built at floor level, made of solid gray PVC.

The upper part is made of solid aluminum with the appearance of stainless steel, anodised.

When closed, it is waterproof, type of protection IP67.

Size: Ø 90 × 79 mm

Cable entry: side via 2 M25 cable entries.

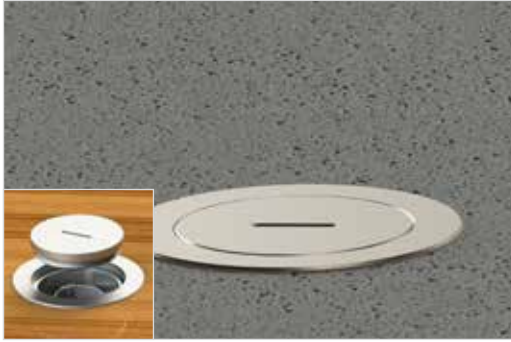

STAKOHOME-7700, Aluminium adjusting ring

Adjusting ring made of solid aluminum, suitable for fixing in wooden double floor, eg grate, etc.

Size: Ø120 × 8 mm

Designed for STAKOHOME-7701-A socket

EXTERIOR/IP67



STAKOHOME-7501-A, 1x socket 230V STAKOHOME-7501-Anw, 1x RJ45 Cat.6a

Round floor box for outdoor , with screw cap with a key.

Also suitable for raised floors. Made of solid gray PVC. When closed, it is waterproof, type of protection IP67.

It can also be installed in double / hollow floors.

Size: upper visible frame Ø 114mm, box Ø 90mm × 74mm (height)
Cable entry: side via 2 M25 cable entries.

Lid surface and upper visible part: natural aluminum / matt, anodised.



STAKOHOME-7703-2, extension

Extension designed for STAKOHOME-7701-A or STAKOHOME-7602-A or STAKOHOME-7501-A

Extension is made of gray solid PVC attachment, suitable as protection against dust and rain (Due to the small hole for the cable, it is no longer IP67 protection).

Size: Ø79 × 80 mm



STAKOHOME-7702-A, 2x socket 230V

Round floor box with screw-on aluminum cover with a key.

Built at floor level, made of solid gray PVC. When closed, it is waterproof IP67.

Size: Ø 170 × 120 mm
Cable entry: side via 2 M25 cable entries.

Brushed stainless steel lid surface, th. 1.5 mm.

The floor box can also be equipped with other components / sockets - TV-SAT, audio, HDMI, etc ..

With the help of accessories (STAKOHOME-7706, aluminum ring), it is possible also fix the socket in a wooden double floor, eg grate, etc.



STAKOHOME-7704-A, 4x socket 230V STAKOHOME-7704-Anw, 3x socket 230V, 2x RJ45 Cat.6a

Round floor box with screw-on aluminum cover with a key.

Built at floor level, made of solid gray PVC. When closed, it is waterproof IP67.

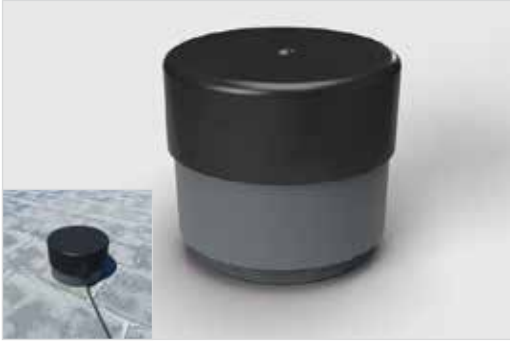
Size: Ø 170 × 120 mm
Cable entry: side via 2 M25 cable entries.

Brushed stainless steel lid surface, th. 1.5 mm.

The floor box can also be equipped with other components / sockets - TV-SAT, audio, HDMI, etc ..

With the help of accessories (STAKOHOME-7706, aluminum ring), it is possible also fix the socket in a wooden double floor, eg grate, etc.

EXTERIOR/IP67

**STAKOHOME-7700-2, extension**

Extension designed for STAKOHOME-7702-A or STAKOHOME-7704-A

Extension is made of gray solid PVC attachment, suitable as protection against dust and rain (Due to the small hole for the cable, it is no longer IP67 protection).

Size: Ø170 × 120 mm

**STAKOHOME-7706, aluminium adjusting ring**

Adjusting ring made of solid aluminum, suitable for fixing in wooden double floor, eg grate, etc.

Size: Ø200 × 8 mm

Designed for STAKOHOME-7702-A and STAKOHOME-7704-A.

**STAKOHOME-SV-10K, 1x 230V**

Manually retractable floor box into the ground. Round (K) upper frame. Built-in at ground level, made of aluminum, load capacity 2t .. Pulling out and lowering manually, with a special key.

The body is watertight when inserted, type of protection IP67.

Type of protection in extended state IP44 (without connection / cabling).

Size: Ø 126x152 mm

Cable entry: 2 × M25.

Also available in the STAKOHOME-SV-10 square frame

**STAKOHOME-7003-Anw, 2x socket 230V, 2x RJ45 Cat.6a**

Round floor box with lockable lid, made of solid aluminum (natural anodised). Built at ground level. Load capacity is 900kg.

When closed, only IP65 (protected against water jets). Therefore, it is not suitable for outdoor places with a high incidence of water - rain / snow, etc ..

Size: Ø 150 × 105 mm

Cable entry: from the bottom / bottom via 2 M25 cable entries.

INDUSTRY/CEE



STAKOHOME-8310-A, 1x CEE 5/16A 400V/6h STAKOHOME-8310-A2, 1x CEE 5/32A 400V/6h

Floor box with hinged lid. Suitable for cleaning with floor sweeping / washing machines. Aluminum lid and frame, stainless steel look, anodised. The body is made of cast iron.

Load capacity 900kg. Built at ground level.

Type of protection IP 64.

Size: 140 × 140 × 130 mm (last dimension height)

Cable entry: side via 2 cable holes Ø 25 mm.

Easy to open and close the lid thanks to the integrated latch.



STAKOHOME-8314-Anw, 2x socket 230V, 4x RJ45 Cat.6a, 1x CEE 5/16A 400V/6h or 1x CEE 5/32A 400V/6h

Floor box with hinged lid. Suitable for cleaning with floor sweeping / washing machines. Aluminum lid and frame, stainless steel look, anodised. The body is made of cast iron.

Load capacity 500kg. Built at ground level.

Type of protection IP 64.

Size: 250 × 160 × 131 mm (last dimension height)

Cable entry: side via 4 cable holes Ø 25 mm

Easy to open and close the lid thanks to the integrated latch.

Other equipment variants are also possible. The floor box can be equipped with various sockets - eg audio, USB, HDMI, etc ..



STAKOHOME-7705-A, 1x CEE 5/16A 400V/6h or 5/32A 400V/6h

Round floor box with screw cap.

Built at floor level, made of solid gray PVC. Aluminum lid surface.

When closed, it is waterproof. Type of protection IP67.

Size: Ø 170 × 122 mm.

Cable entry: side, via 2 cable glands M25 × 1.5.

Accessories (must be purchased separately): STAKOHOME-7700 (for installation in raised floors)



STAKOHOME-7700, aluminum adjusting ring designed for STAKOHOME-7705-A

Adjusting ring made of solid aluminum, suitable for mounting in a wooden double floor, eg grate, etc ..

Size: Ø120×8 mm

INDUSTRY/CEE



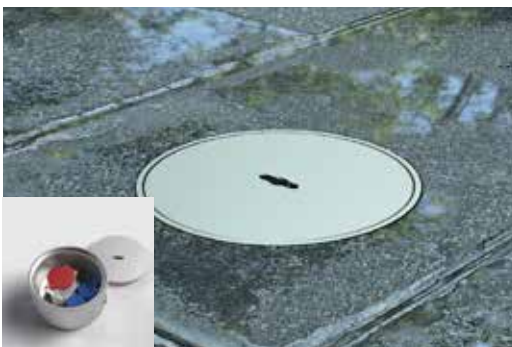
STAKOHOME-7012-63, 1× CEE 5/63A 400V/6h

Round floorbox for outside use, made of solid aluminum (natural anodized).
Built at ground level, load capacity 900kg.

The lid does not have a screw-in thread, when closing the lid is only pushed into the box. **The key is used to remove the lid.**

Type of protection IP67

Size: Ø 200 × 221 mm.



STAKOHOME-7012-A, 2× socket 230V 1× CEE 5/16A 400V/6h or 5/32A 400V/6h

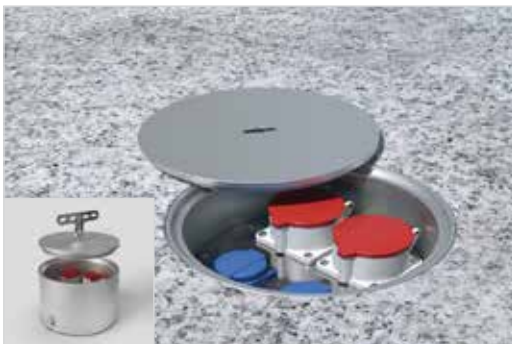
Round floorbox for outside use, made of solid aluminum (natural anodized).
Built at ground level, load capacity 900kg.

The lid does not have a screw-in thread, when closing the lid is only pushed into the box. **The key is used to remove the lid.**

Type of protection IP67

Size: Ø 200 × 150 mm.

Cable entry: bottom and side, via a total of 3 M25 cable entries.



STAKOHOME-7022-A, 2× socket 230V, 2× CEE 5/16A 400V/6h or 5/32A 400V/6h

Round floor box with lockable lid, made of aluminum (natural anodised).

Built at ground level, can be loaded by a car.

When closed, it is waterproof.

Type of protection IP67.

Size: Ø 250 × 150 mm.

Cable entry: bottom and side, via 4 M25 cable entries.



STAKOHOME-BT-4022, 2× CEE 5/16A 400V/6h or 5/32A 400V/6h, 2× socket 230V

Stainless steel body. Lid - natural aluminum, anodised.

Can be loaded by a car.

Type of protection IP 65.

Size: approx. 400 × 400 × 116 mm.

Cable entry: via 4 cable holes Ø 25 mm.

PISTON



STAKOHOME-SV-CE16K/H, 1x 400V 5/16A STAKOHOME-SV-CE32K/H, 1x 400V 5/32A

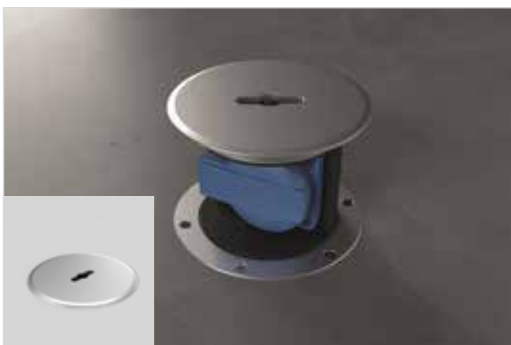
Manually pull-out / flush socket into the ground. **Round (K) or square (H) top frame.** Built at ground level, made of aluminum, load capacity 6.5 t. Pulling out and lowering manually, with a special key.

The body is watertight when inserted, type of protection IP67.

Type of protection in extended state IP54 (without connection / cabling).

Size: version K: Ø 210x230 mm, version H: 210x210x230 (height) mm.

Cable entry: 2 x M25.



STAKOHOME-SV-10K, 1x 230V

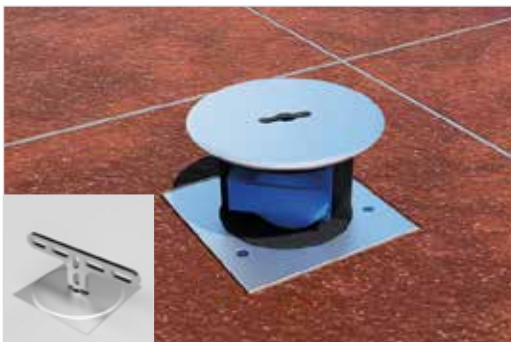
Manually pull-out / flush socket into the ground. **Round (K) or square (H) top frame.** Built at ground level, made of aluminum, load capacity 2 t. Pulling out and lowering manually, with a special key.

The body is watertight when inserted, type of protection IP67.

Type of protection in extended state IP44 (without connection / cabling)

Size: Ø 126x152 mm

Cable entry: 2 x M25.



STAKOHOME-SV-10H, 1x 230V

Manually pull-out / flush socket into the ground. **Round (K) or square (H) top frame.** Built at ground level, made of aluminum, load capacity 2 t. Pulling out and lowering manually, with a special key.

The body is watertight when inserted, type of protection IP67.

Type of protection in extended state IP44 (without connection / cabling)

Size: 125x125x152mm (height)

Cable entry: 2 x M25.



STAKOHOME-SV-40K, 4x 230V STAKOHOME-SV-40Knw, 3x 230V, 2xRJ45 Cat.6a

Manually pull-out / flush socket into the ground. **Round (K) or square (H) top frame.** Built at ground level, made of aluminum, load capacity 6,5 t. Pulling out and lowering manually, with a special key.

The body is watertight when inserted, type of protection IP67.

Type of protection in extended state IP44 (without connection / cabling)

Size: Ø 210x230 mm

Cable entry: 2 x M25.

PISTON



STAKOHOME-SV-40H, 4x 230V
STAKOHOME-SV-40Hnw, 3x 230V, 2xRJ45 Cat.6a

Manually pull-out / flush socket into the ground. **Round (K) or square (H) top frame.** Built at ground level, made of aluminum, load capacity 6,5 t. Pulling out and lowering manually, with a special key.

The body is watertight when inserted, type of protection IP67.
 Type of protection in extended state IP44 (without connection / cabling)

Size: 205x205x230 mm (height)
 Cable entry: 2 x M25.



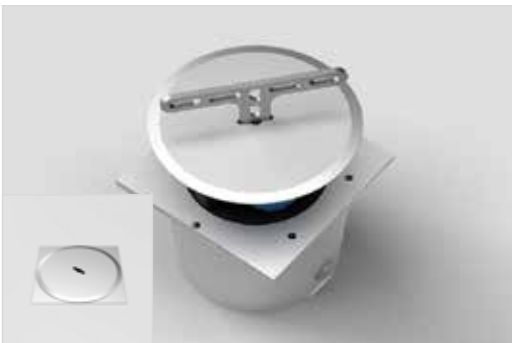
STAKOHOME-SV-31K, 3x 230V, via cable connector 1x 400V 5/16A
STAKOHOME-SV-31Knw, 2x 230V, via cable connector 1x 400V 5/16A, 2xRJ45 Cat.6a

Manually pull-out / flush socket into the ground. **Round (K) or square (H) top frame.** Built at ground level, made of aluminum, load capacity 6,5 t. Pulling out and lowering manually, with a special key.

The body is watertight when inserted, type of protection IP67.
 Type of protection in extended state IP44 (without connection / cabling)

Size: Ø 210x230 mm
 Cable entry: 2 x M25.

Alternatively, other combinations (sockets) are possible.



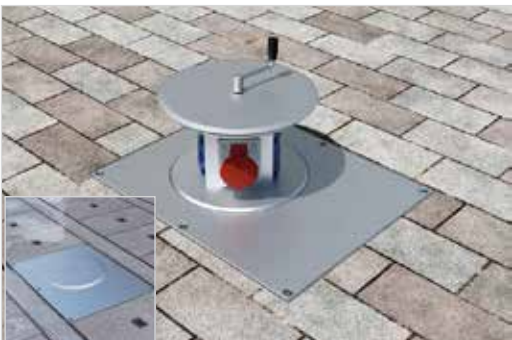
STAKOHOME-SV-31H, 3x 230V, via cable connector 1x 400V 5/16A
STAKOHOME-SV-31Hnw, 2x 230V, via cable connector 1x 400V 5/16A, 2xRJ45 Cat.6a

Manually pull-out / flush socket into the ground. **Round (K) or square (H) top frame.** Built at ground level, made of aluminum, load capacity 6,5 t. Pulling out and lowering manually, with a special key.

The body is watertight when inserted, type of protection IP67.
 Type of protection in extended state IP44 (without connection / cabling)

Size: 205x205x230 mm (height)
 Cable entry: 2 x M25.

Alternatively, other combinations (sockets) are possible.



STAKOHOME-SV-008, 8x socket 230V
STAKOHOME-SV-008nw, 6x socket 230V, 4x RJ45 Cat.6a
STAKOHOME-SV-016, 6x socket 230V, 1x CEE 5/16A 400V/6h,
STAKOHOME-SV-106, 5x socket 230V, 1x CEE 5/32A 400V/6h,
2x RJ45 Cat.6a

Floor box (grounding socket box), made of aluminum, load capacity 6.5t , standard surface with the look of anodized stainless steel. The floor box is extended and retracted manually using an Allen key in the lid, using a screw thread.

Type of protection IP 65.
 Type of protection in extended state IP44 (without connection / cabling).

Floor box with hinged lid.
Size: 500 x 400 x 251 mm.
 Cable entry: side 2 x Ø25mm and 2 x Ø32mm.

At the bottom of the box, a Ø 25mm hole for water drainage is ready for connection.

Alternatively, other combinations (sockets) are possible - TV-SAT, audio, compressed air, etc ..

ENERGY COLUMNS



STAKOHOME-ES-2R, 2x socket 230V, STAKOHOME-ES-2Rnw, 1x socket 230V, 1x switch STAKOHOME-ES-2Rnw, 1x socket 230V, 1x USBc charger

Energy pole for outdoor installation. Low design. Option variant with switch (eg for light).

The V2A stainless steel body is blasted with glass balls.

Socket frame and covers - stainless steel.

Type of protection IP44.

Size: Ø130 × 230mm (height)

Cable entry: bottom 2 × Ø25 mm.



STAKOHOME-ES-4, 2x socket 230V, 1x CEE 5/16A 400V/6h or 5/32A 400V/6h STAKOHOME-ES-4nw, 2x socket 230V, 2x RJ45 Cat.6a STAKOHOME-ES-4nw, 2x socket 230V, 1x USB nabíječka

Innovative - stable - modern design. Low design.

Energy pole for outdoor installation.

The V2A stainless steel body is blasted with glass balls.

Type of protection IP 44/54.

Size: Ø129 × 438 mm.

Cable entry: from below 4x Ø25 mm.

Equipment according to customer requirements. The electric column can be equipped with others various sockets and devices - eg - DATA (2 × RJ45 Cat.6a), button, etc ..



STAKOHOME-ES-22, 4x socket 230V, 1x CEE 5/16A 400V/6h or 5/32A 400V/6h STAKOHOME-ES-22, 2x socket 230V, 2x CEE 5/16A 400V/6h or 5/32A 400V/6h STAKOHOME-ES-22nw, 3x socket 230V, 2xRJ45 Cat.6a, 1x CEE 5/16A 400V/6h or 5/32A 400V/6h

Innovative - stable - modern design.

Energy pole for outdoor installation.

The V2A stainless steel body is blasted with glass balls.

Type of protection IP 54.

Size: Ø 154 × 700 mm.

Cable entry: from below

Equipment according to customer requirements. The electric column can be equipped with others various sockets and devices - eg - DATA (2 × RJ45 Cat.6a), button, etc ..



STAKOHOME-ES-K

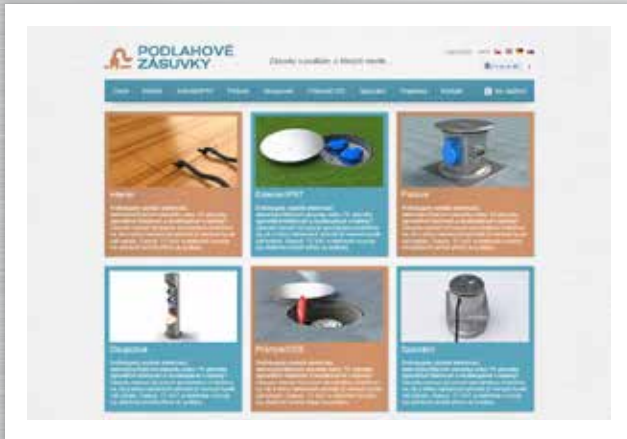
Massive base / anchor made of stainless steel (the surface is sandblasted) for fixing the electric pole in open terrain (clay, gravel, etc.).

Possibility to concrete.

Designed for STAKOHOME-ES-4 and STAKOHOME-ES-22 electric columns.

Size: Ø210 x 543 mm (height)

Stakohome Network s.r.o.



That the floor box in INTERIOR do not have to be an ugly plastic box is proved by our offer of design floor boxes/sockets intended for apartments, family houses, luxury buildings, commercial premises. The portfolio also includes floor sockets in IP67 design for terraces, gardens, garages, around a family house or commercial premises.

www.floor-sockets.com



Specialized website for intelligent systems in residences. The Stako-home solution provides the user with easy and efficient control and operation of lighting, blinds / shutters, heating, air conditioning, as well as music, movies and much more. It offers supervision of security elements, such as IP cameras, el. burglar alarm system or EPS fire system.

www.inteligentni-byt.cz



stakohome® Residential switchboard

The StakoHome low-voltage switchboard is the only truly comprehensive low-voltage (data) residential switchboard solution on the market. The Stakohome solution offers a cheap and easy way to solve today's obvious data distribution in apartments.

www.bytovy-rozvadec.cz

stakohome[®]

Stakohome Network s.r.o.
www.stakohome.cz
www.floor-sockets.com

tel.: +420 226 517 522
mobile: +420 776 780 378
stakohome@stakohome.cz

Showroom a provozovna:
Aloisovská 934/8,
198 00 Praha 9, Hloubětín

Note: Typographical errors and changes reserved.



www.floor-sockets.com